

RB2SPD 2 SPEED KIT

93-1005K1 DRILL KIT, RAIL, GAS, RAILBOSS, 2 SPEED, CN

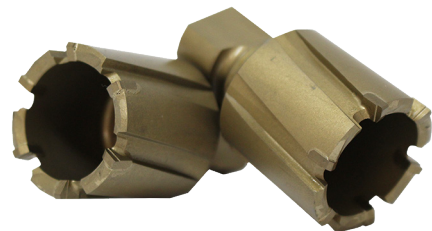
93-1005K2 DRILL KIT, RAIL, GAS, RAILBOSS, 2 SPEED, CP



- Reliable 4-stroke Gas Powered Rail Drill
- Two speed gear box
- 2-1/2 times the tool life with carbide bits
- Quill feed arbor with thru-the-tool coolant
- One stroke ergonomic feed handle
- 10 point clamping system
- Works with Black Twister 150 RPM
- Works with Carbide Twister 350 RPM

KIT INCLUDES:

- 1 – **93-1200** Coolant Bottle
- 2 – **93-1100** Cutter Pilots
- 3 – **93-BC****** Carbide Twister
- 1 – **93-1420** Combination Hole Location Template
(100/115/132/136lb. for top of rail)
- 1 – **93-1310** Cutting Fluid
- 2 – **93-S115** & **93-S132** Pair Rail Shoes



Carbide 93-BC****

**Both RB28 (93-1010) and RB35 (93-1045) will be discontinued and obsolete.*